

•
•
the gibson hotel



Hotel facilities

- 252 bedrooms
- Coda eatery & Hemi bar
- 24hr gym
- Relaxation suite
- City centre location
- Luas tram on doorstep
- 15min drive from Dublin airport
- 10 min walk to CCD



Conference & events

- 9 state of the art meeting spaces
- Air conditioning
- Natural daylight
- High speed WiFi
- Built in AV



Why choose us?

- Healthcare venue assessed
- 1st BREEAM certified hotel in Ireland
- Courtyard spaces
- Complimentary bicycles



Location



Travelling by car

The Gibson Hotel is located in Dublin 1 at the Point Square right opposite the 3Arena. Parking is available downstairs in the Euro Car Parks Point Square. Hotel residents do not need to pre-book the car park.



Travelling from Dublin Airport

The Gibson Hotel is a 15 min taxi journey from the airport.

Alternatively, the Aircoach will bring you from the airport to just outside the 3Arena, the hotel is a 1 min walk from this stop.



Luas Tram

The Gibson Hotel is located right at the Luas tram stop 'The Point'. This is on the red line service and travels into the city centre every 10 minutes giving guests easy access to the city. Luas tickets can be purchased just outside the tram.



Major Bus and Train Links

The Gibson Hotel has a number of Dublin Bus stops located nearby and is just a 10 min Luas journey from Connolly Station and a 20 min Luas journey from Heuston Station.

Third Floor Stratocaster Suite

Located on the third floor with soaring floor to ceiling windows, our Stratocaster Suite boasts stunning 180 degree views of Dublin Port. The space can be divided into three rooms giving you freedom and flexibility to configure it to your exact requirements for your event in Dublin.



Height	Length	Width	Floor space
5.5m	11.43m	23.06m	273.86m ²



U-Shape
60



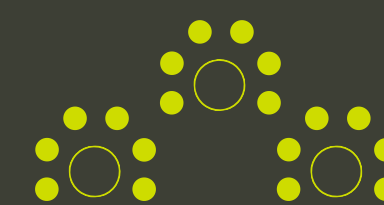
Theatre
300



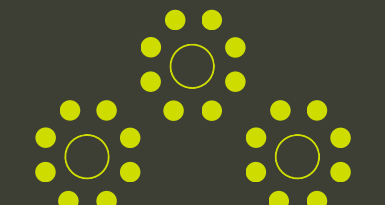
Classroom
150



Boardroom
-



Cabaret
120



Banquet
200

Third Floor

Alhambra & Broadcaster

We can accommodate up to 70 delegates in our Alhambra & Cordoba Suites. It also divides into two, in case you need a breakout room or annex.

Alhambra

Height	Length	Width	Floor space
2.7m	7.12m	9.69m	68.99m ²

Broadcaster

Height	Length	Width	Floor space
2.7m	6.10m	4.56m	27.04m ²



U-Shape
27 / -



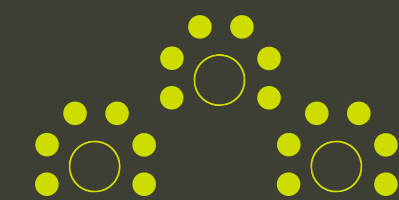
Theatre
65 / -



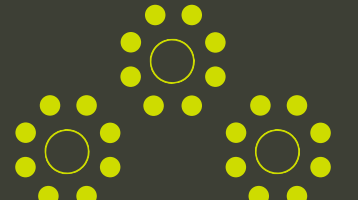
Classroom
35 / -



Boardroom
22 / 10



Cabaret
30 / -



Banquet
50 / 10

Fourth Floor

Cordoba & Rickenbacker

Broadcaster & Rickenbacker are both unique settings to hold a board meeting. They are fully equipped with screens and projectors and space for in-room catering



Cordoba

Height	Length	Width	Floor space
2.7m	7.12m	11.18m	79.6m ²

Rickenbacker

Height	Length	Width	Floor space
2.7m	7.12m	4.54m	32.32m ²



U-Shape
29 / -



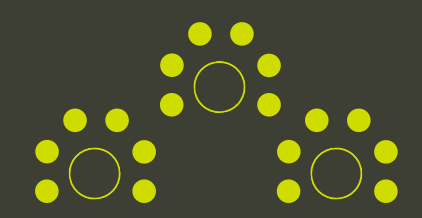
Theatre
70 / 25



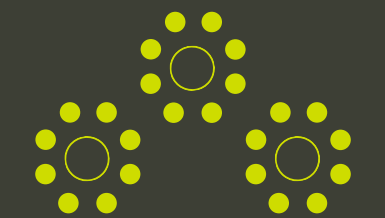
Classroom
40 / 16



Boardroom
28 / 16



Cabaret
30 / -



Banquet
- / -

AV Technology

- Hybrid or video conferencing meeting facilities
- Fully integrated AV with large drop-down screens and built-in LCD projector in every room.
- Surround sound, PA system and microphones in Stratocaster Suite.
- Complimentary use of 100mbps wi-fi throughout
- Dedicated wired internet line if required
- Lectern and staging
- Laptop to LCD
- Dedicated in-house A/V professionals
- Two 415 volt 3-phase supplies, 63 amp & 40 amp.

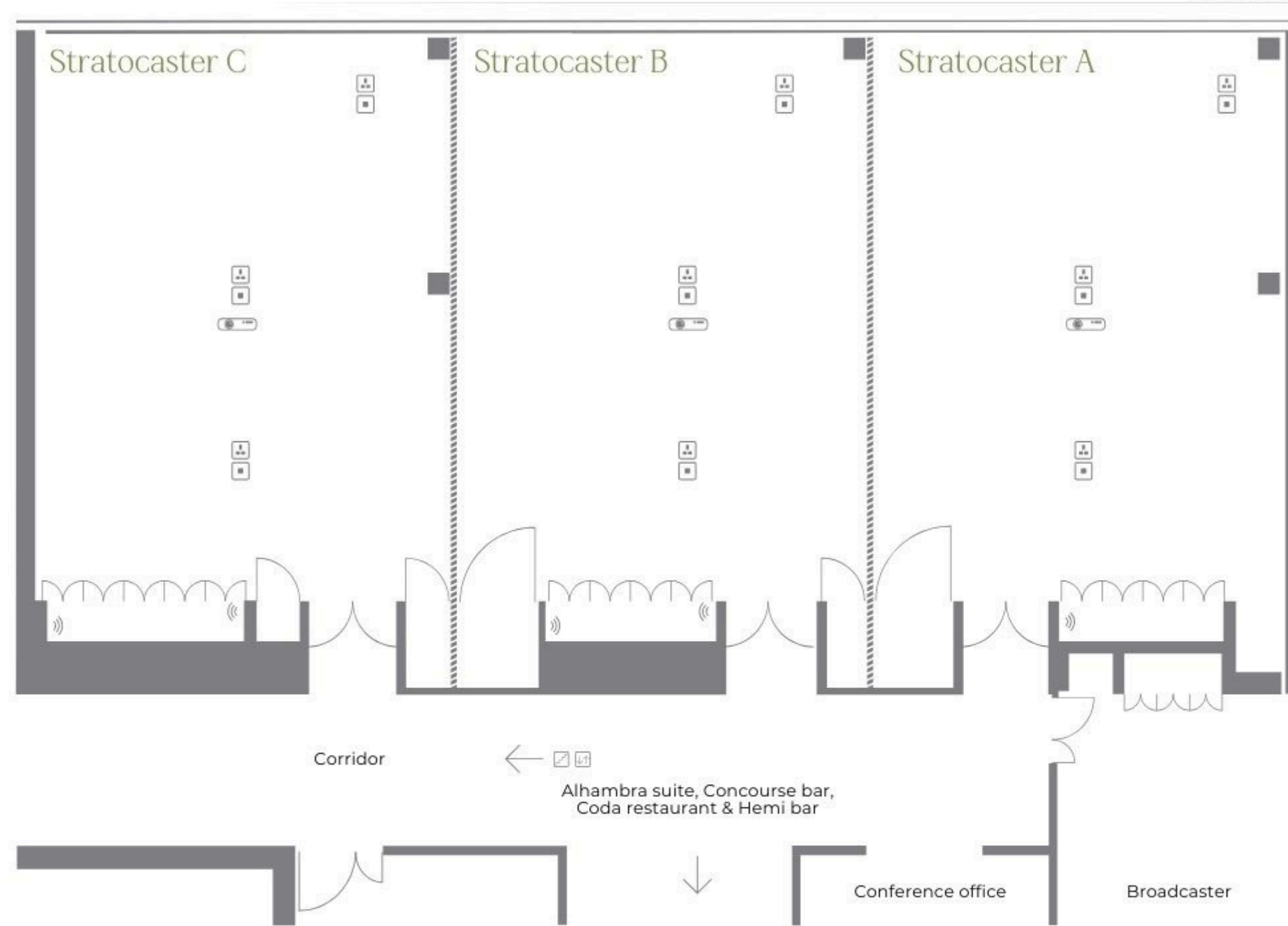
Hybrid Meetings

- Now to get technical, this combines Clevertouch pro interactive touch screen with poly video and audio studio for all-in-one video conferencing made simple. Simply walk up & use your own device with a single cable to access our 65" Clevertouch pro panel.
- Just in case we lost you at Clevertouch, here's the encore - A flexible open platform which allows you to use whichever conferencing tool you wish from your own device: zoom, Microsoft teams, cisco, skype for business, slack or google hangouts.
- The crystal clear audio allows you to communicate easily with 4k video which has automatic speaker tracking formation. An interactive whiteboard that has fluid & natural touch experience including touch screen, pinch pull, finger-touch and stylus.
- Share screens & devices which allows you to simply save your work using QR codes and high quality poly video & audio streaming with studio bar.

Third floor

Stratocaster Suite

East facing



Key

- Projector** 
- Socket** 
- Data** 
- Telephone** 
- Wifi** 
- Windows** 
- Stairs** 
- Lifts** 

Room details

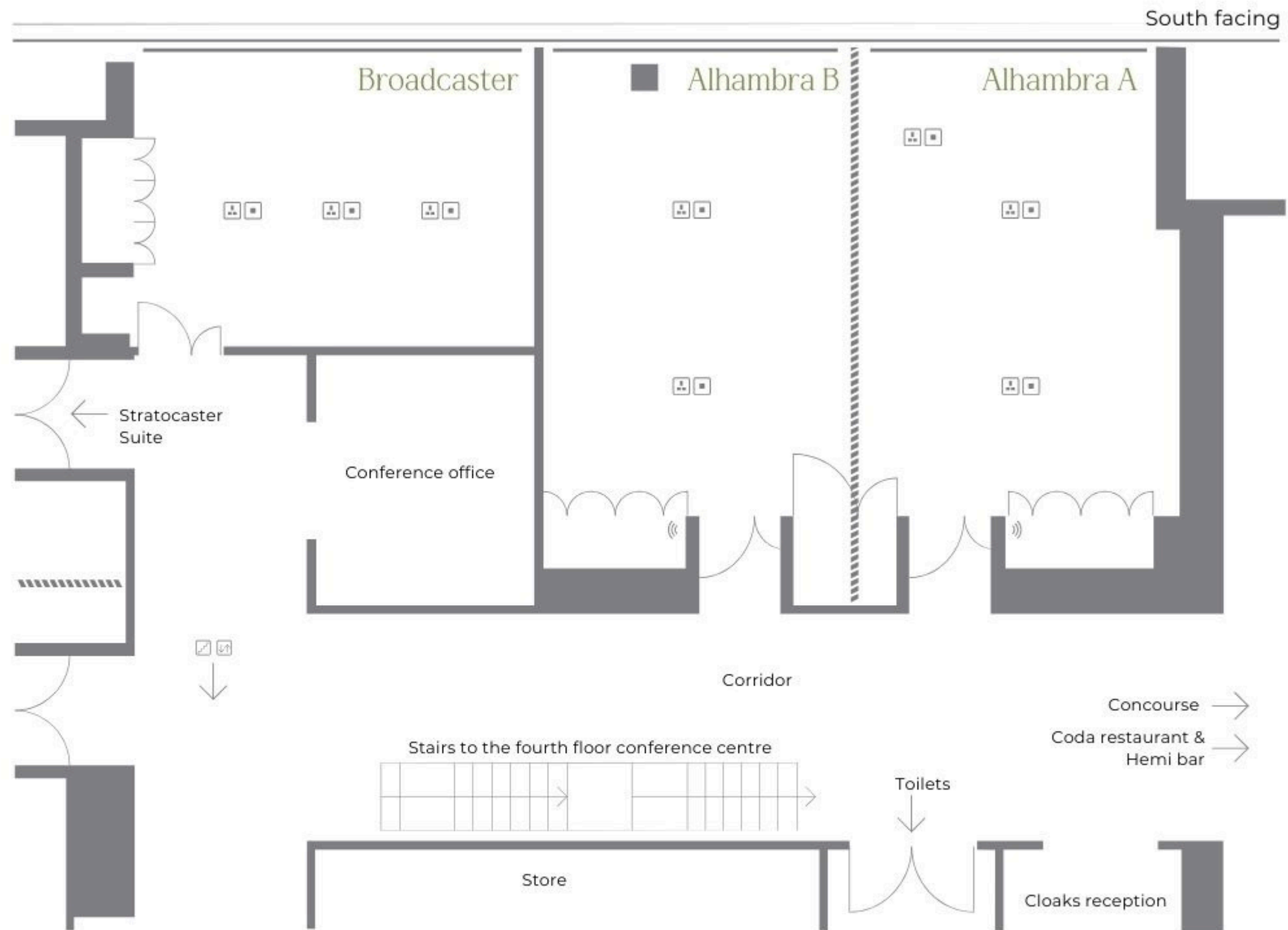
Stratocaster	Full suite	Suite A	Suite B	Suite C
Ceiling height:	5.5 x 2.7m	5.5m	5.5m	2.7m
Length:	11.43m	11.43m	11.43m	11.43m
Width:	23.96m	7.90m	7.90m	7.97m
Capacity:	Banquet 200 Boardroom 68 U-shape 77 Theatre 300 Classroom 140	Banquet 60 Boardroom 28 U-shape 32 Theatre 92 Classroom 45	Banquet 60 Boardroom 28 U-shape 32 Theatre 92 Classroom 45	Banquet 60 Boardroom 28 U-shape 32 Theatre 92 Classroom 45



the gibson hotel at the point village, dublin
1, ireland tel: +353 (0)1 681 5000 fax: +353 (0)1
681 5051 www.thegibsonhotel.ie

Third floor

Broadcaster
Alhambra A&B



the gibbon hotel at the point village, dublin 1, ireland tel: +353 (0)1 681 5000 fax: +353 (0)1 681 5051 www.thegibbonhotel.ie

Key

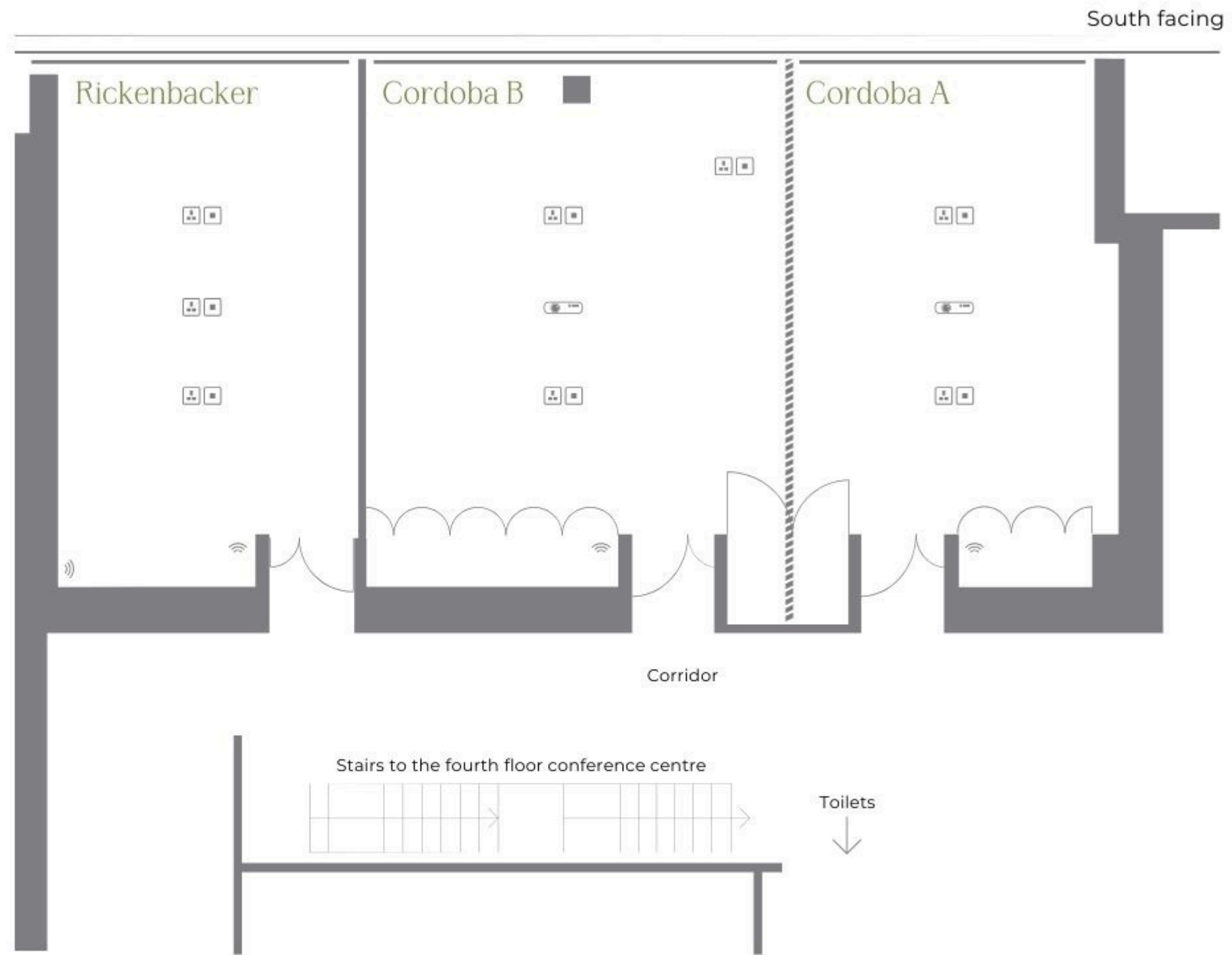
- Projector
- Socket
- Data
- Telephone
- Wifi
- Windows
- Stairs
- Lifts

Room details

	Broadcaster	Alhambra A	Alhambra B	Alhambra Full Suite
Ceiling height:	2.7m	2.7m	2.7m	2.7m
Length:	6.10m	7.20m	7.20m	7.2m
Width:	4.58m	4.90m	4.69m	9.69m
Capacity	Boardroom 14 Private dining 10 Classroom NA	Banquet 20 Boardroom 16 U-shape 16 Theatre 30 Classroom 15	Banquet 20 Boardroom 16 U-shape 16 Theatre 30 Classroom 15	Banquet 50 Boardroom 22 U-shape 27 Theatre 72 Classroom 35

Fourth floor

Rickenbacker
Cordoba A&B



the gibbon hotel
the gibbon hotel at the point village, dublin
1, ireland tel: +353 (0)1 681 5000 fax: +353 (0)1
681 5051 www.thegibbonhotel.ie

Key

- Projector
- Socket
- Data
- Telephone
- Wifi
- Windows
- Stairs
- Lifts

Room details

	Rickenbacker	Cordoba A	Cordoba B	Cordoba Full Suite
Ceiling height:	2.7m	2.7m	2.7m	2.7m
Length:	7.12m	7.12m	7.12m	7.12m
Width:	4.54m	6.31m	4.77m	11.18m
Capacity	Banquet 20 Boardroom 16 U-shape 16 Theatre 26 Classroom 12	Banquet 20 Boardroom 16 U-shape 17 Theatre 38 Classroom 20	Banquet 20 Boardroom 16 U-shape 16 Theatre 26 Classroom 16	Banquet 55 Boardroom 28 U-shape 29 Theatre 82 Classroom 40



Hitting the high notes

Get in touch to find out how we can help you arrange your meeting.

t: +353 (0)1 681 5055

e: events.gibson@thegibsonhotel.ie

w: www.thegibsonhotel.ie

a: The Gibson Hotel at the Point Square, Dublin 1, Ireland, D01 X2P2